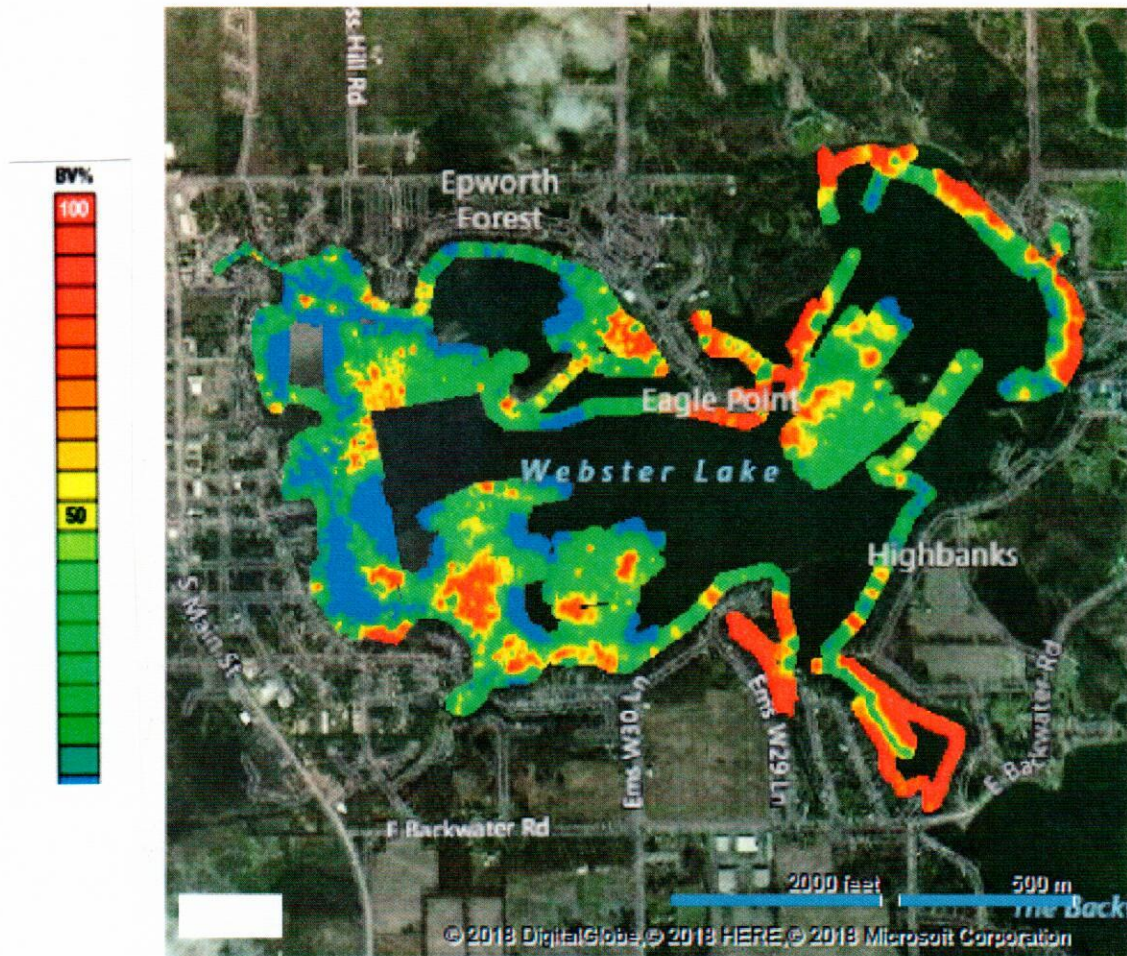


2018 Maps of Weed Treatment Results
3 Maps – each made on a different date

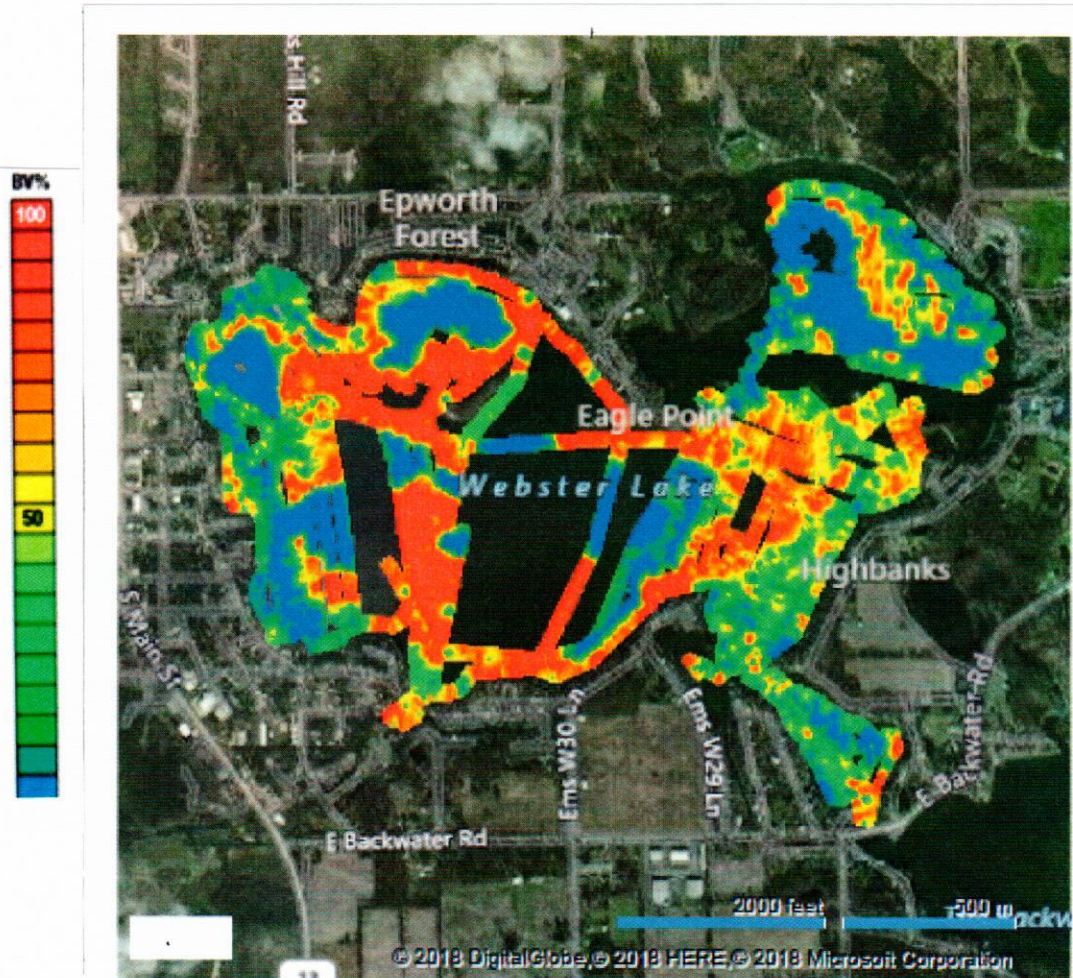
Map #1, created May 15, 2018, shows spring weed masses prior to any treatment.

Color Code: **Red** = heavier masses. **Yellow** = medium masses. **Green** = lighter masses. **Blue** = no weeds. See color scale for variants in color.



Map #2, created June 14, 2018, shows weed masses remaining after the May 23rd treatment of invasive weeds and before the shoreline/channel weed treatment. At the time of this mapping, the shoreline and channel treatments were pending and scheduled to be completed on June 13.

Color Code: **Red** = heavier masses. **Yellow** = medium masses. **Green** = lighter masses. **Blue** = no weeds. See color scale for variants in color.



Map #3, created August 1, 2018, shows weed masses remaining after both the May 23 treatment of invasive weeds and the shoreline/channel treatment that was applied on June 20.

Color Code: **Red** = heavier masses. **Yellow** = medium masses. **Green** = lighter masses. **Blue** = no weeds. See color scale for variants in color.

